



Overview of the tailored capacity building support and examples of support provided to Members States.

Brussels

11th February 2020

www.ricardo.com

© Ricardo plc 2020



Agenda



- Objectives of the project
- Capacity building support available
- Current examples of capacity building support
- How to access capacity building support

- General objective is to:
 - Promote GHG emissions reductions in the EU by **strengthening Member States' capacity** to implement, and meet their objectives under the Effort Sharing Legislation
- Specific objectives are to:
 - **Identify and share good practices of policies and measures** in Member States which reduce emissions in effort sharing sectors;
 - Improve Member States' **capacity for performing ex-post policy evaluations**; and
 - Support Member States in **developing appropriate policy measures** and in **conducting ex-policy evaluations**.
- Timescale: Project closes late in 2020
- Methods: Capacity building **workshops**, **case study brochure**, ex-post **evaluation guidelines** and **tailored packages of capacity building support**

Capacity building support available



Type of support	Number of days support	Number of MS	Number of MS where support has started
Technical support from the consultant team on specific topics	5 to 20	Maximum of 10	6
Extended support on one more detailed topic	Up to 80	1	1

Capacity building support available

Support could include

- Methods:
 - Webinars
 - Tailored capacity building workshops
 - Advice and guidance for consultant team
- Topics :
 - Methodologies or tools for policy evaluation
 - Screening and initial assessment of promising policy options
 - Advice on good practice in policy design, implementation or evaluation
 - Reviewing ex-post policy evaluation steps
 - Matching practitioners for peer-to-peer networking on policy design and implementation or evaluation

Sectors could include

- Agriculture
- Transport
- Buildings
- Waste
- Cross sectoral e.g. taxation

Approach to date

Survey

- Identification of Member States capacity building needs and priorities
- Survey invite sent to Member States through DG CLIMA WG2 in February/ March 2019
- Re-opened in January 2020 for further request for support

Capacity Building Application

- Contacted MS who indicated in the survey that they are interested in capacity building support
- Co-development of a programme of work for approval, via calls and email
- Application for support sent to DG CLIMA for review and approval

Support Delivery

- Kick-off calls between relevant consultants and MS representatives
- Delivery of work in accordance with agreed programme, based on the timeline and deliverable agreed in the application.

Example 1 - Bulgaria

MS	Sector	Summary	Days allocated
Bulgaria	Transport, agriculture, cross cutting	<ul style="list-style-type: none">• Multiple sector package, focusing on the development of a methodology for the review and prioritisation of new policies in agriculture, transport sector and cross-cutting sectors.• Includes the delivery and implementation of the evaluation framework in each sectors through a series of facilitated workshops.• It is expected that this framework will be transferrable, and aid future policy assessment and planning.	20

Approved Support Packages

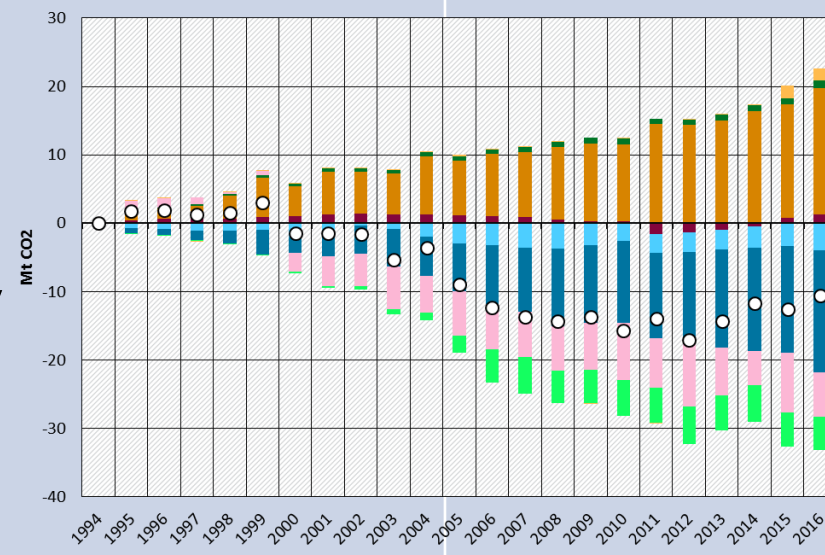


Example 2 - Estonia

MS	Sector	Summary	Days allocated
Estonia	Agriculture	<ul style="list-style-type: none">• Support will aid the design and implementation of policies to support deploy AD plants in Estonia.• Screening and initial assessment of promising policy options and associated funding mechanisms• Creation of a shortlist and measures to review promising policy options• Support early design stages of chosen policy	19

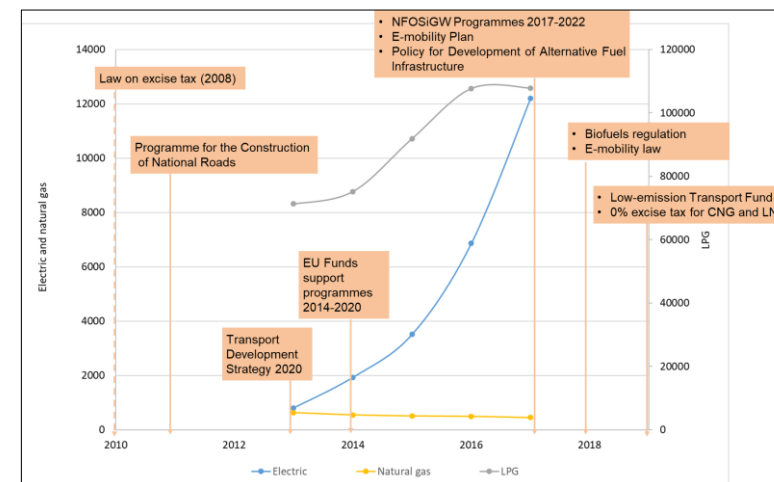
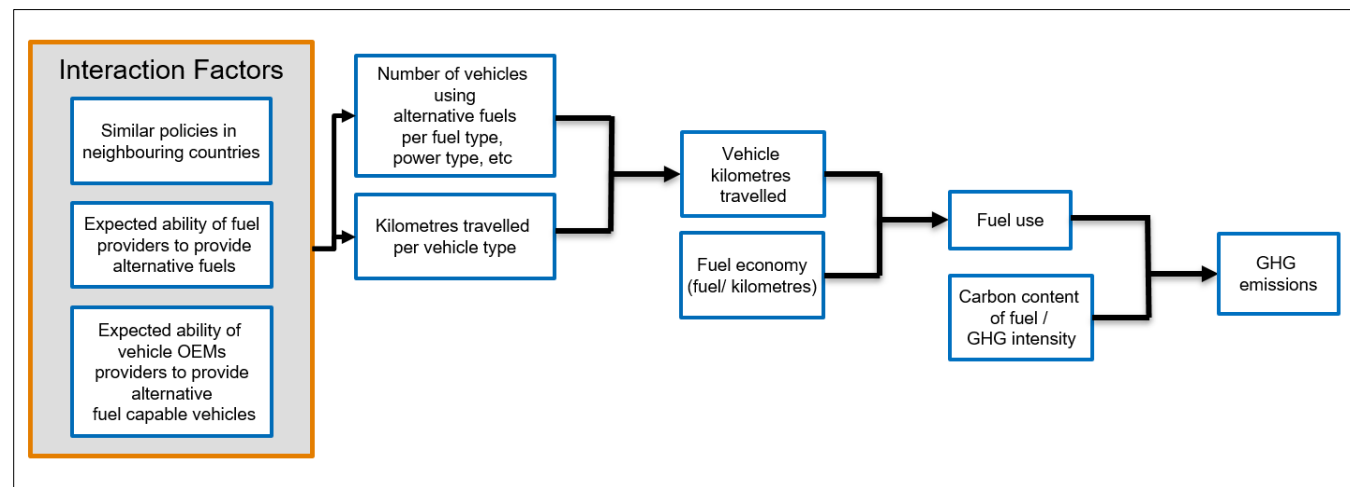
Example 3 - Luxembourg

MS	Sector	Summary	Days allocated
Luxembourg	Transport	<ul style="list-style-type: none"> Support will build knowledge on how to analyse impacts of existing road transport policy measures on GHG emissions. Decomposition analysis has been identified as a more robust approach than the existing models. The team in Luxembourg will gain greater understanding of the impact of different road policies on CO2-emissions. Also enable use of decomposition analysis methodology in the future. KO in January 2020 	15



Example 4 - Poland

MS	Sector	Summary	Days allocated
Poland	Transport	<ul style="list-style-type: none"> Support in conducting ex-post analysis of a package of road transport package. Building capacity in the development of a coherent methodology for ex-post evaluation of road transport PaMs, with a focus on understanding the impact of these measures on GHG emissions. Approach has been split into 6 'modules' according to the strands in Poland's road transport policy package 	80



How to access capacity building support



- Survey was re-opened in January 2020
 - Invitation to participate sent to Member States
 - Support needs to be completed by September 2020
- Status
 - 3 new responses for support received so far, and are currently being co-developed
 - If all 3 are taken forward then available resources will be fully utilised.
 - Survey **remains open**.
 - Additional applications will be put on **standby**
- Contact the project team today, via the survey or via email (ESLCapacityBuilding@ricardo.com)

Other support available



- Webinars being run in Spring/Summer 2020
- Available to DG CLIMA WG 2 members and all interested policy makers.
- Topics still to be decided
- How to register or get more information:
 - Information and registration will be launched on the website: <https://effortsharing.ricardo-aea.com/>
 - Email: ESLCapacityBuilding@ricardo.com
 - Or talk to one of the team today

Questions